

# WELCOME TO OUR NEWSLETTER

## A MESSAGE FROM EMMANUEL (Director)

As April is National Stress Awareness Month it's more important than ever that we take time to relax, de-stress and re-energise. We all know this job can be challenging and testing at times which is why we should use our holidays days before we lose them!



*We are celebrating these birthdays this month:*

- Blessing Abel
- Omafuvwe Ubredi
- Anthony Ochei
- Kimberley Mitchell
- Mary Oriakhi
- Kay Francis



## Quote of the Month



**When a flower doesn't bloom,  
you fix the environment in which  
it grows, not the flower."**

Alexander Den Heijer

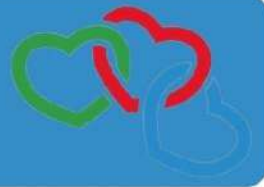


## Employee Assistance Programme

We have introduced an Employee Assistance Programme which supports Health & Wellbeing. We are pleased to partner up with Health Assured that provides a service designed to help you deal with personal or professional problems that could be affecting your home life, work life, health and general well being. Please click on the link below to register.

<https://greenharvestcc ltd.sharepoint.com/:v:/s/WebsiteLinks/EQ2IBgBI-cpljvCbUxH75LcB3T3SoBihmU2pPrbrAvJAsw?e=bqI7vN>





We celebrated two of our Young people's birthdays; Sky who was 17 & Jessica who was 22



Hope Ugwuabanachi  
Support Worker

Welcome

The department of Education have now published the Guide to Support Accommodation for Children & Young People.

There will be Four Quality Standards

- Leadership and Management
- Protection
- Accommodation
- Support

Overarching themes across all standards

- Views, wishes and feelings of young people
- Working together
- Building strong and meaningful relationships

Over the next few months we will be working hard to ensure that we are ready to Registered with Ofsted



Providing supported accommodation for children and young people - GOV.UK ([www.gov.uk](http://www.gov.uk))



Carmelina Adil  
Support Worker

Welcome

Employee of the Month

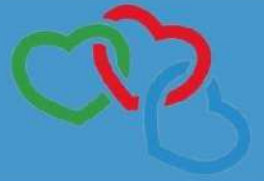
simon Mesfin

WELL DONE

Emmanuel Thompson  
Residential Support Worker

Welcome





April has been an exciting month for us at the Family Assessment Centre. We have had a our team start. Joining us is Vanessa (family assessment practitioner) Edward (family assessment practitioner), Libby (family assessment support worker), Katrina (family assessment support worker), Ryan (family assessment support worker) and Marcus (family assessment support worker).

We have also welcomed our first family into the centre and the team are working hard to make sure everything is just right for them!



## Childrens Home Employee of the Month



**Donna Pace**

**WELL DONE!**

## Staff Leavers

Marcus McDonald starts his next adventure with Green Harvest he is now working at our Family Assessment Centre, every wishes at Gillett Road wishes him the best of luck!

This month we also say goodbye to our Student Social Workers who have completed their 70 days placement with us in SIA. We wish Sandra, Leigh, Lauren, Hollie and Deginda the best of luck with their social work degree.

## FOLLOW US ON SOCIALS



Green Harvest  
CC Ltd

@green.harvestcc



greenharvestcc



**GREEN HARVEST**  
Let's Build A Successful Future Together

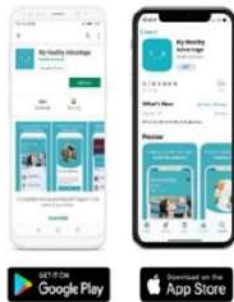
**Health Assured -**



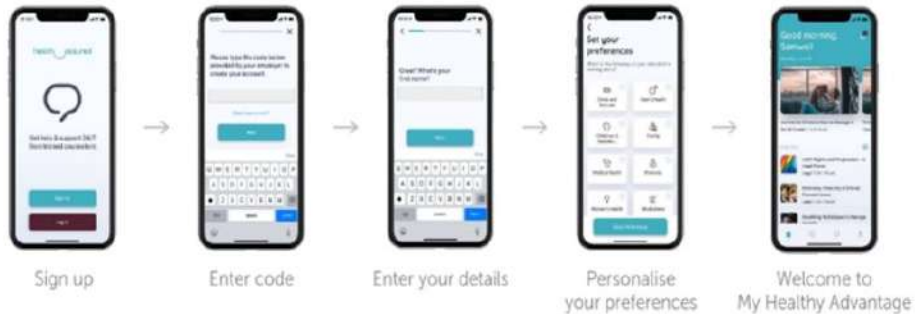
Download & register My Healthy Advantage

Our new health and wellbeing mobile app provides an enhanced set of wellbeing tools and engagement features. Follow these simple steps to download and register your My Health Advantage app.

1. Download



2. Register



**Log In Details**

**Unique app code/Employer code: MHA256343**

**Wellbeing Portal Link: [HealthAssuredEap.co.uk](http://HealthAssuredEap.co.uk)**

**Username: wellbeing**

**Password: rentdropssnap**

Free 24 hour confidential helpline:

**0800 028 0199**

[healthassuredeap.com](http://healthassuredeap.com)