

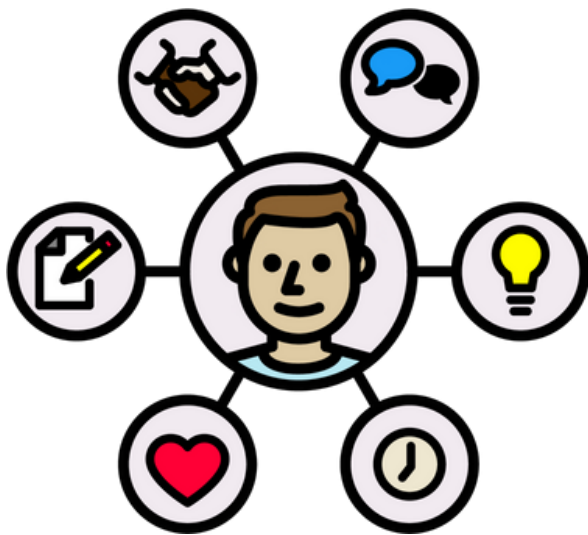
What is SIA?

(Semi-Independent Accommodation)

Our semi-independent homes are more than just somewhere to live. They bridge the gap between childhood and adulthood so that a young person is prepared for the challenges of living independently. Some young people refer to leaving care as 'the instant expectation of adulthood'. They are suddenly expected to know how to cook their own meals, run a home and manage their finances, all in one go and without any support.



LIFE



We provide safe, comfortable homes for care leavers, homeless teenagers and unaccompanied asylum-seeking children, where they can learn the essential life skills they will need when they transition to independent living. The type of accommodation we offer varies depending on the young person. However, no matter which one of our supported housing services they live in, staff will always support young people to work towards their goals and build their confidence for the future.

Research tells us that young people in the care of local authorities who are seeking to gain life skills and independence, encounter limited options in obtaining the necessary services such as housing, education and employment which can help shuttle them towards independent living. This is where our semi-independent accommodation and support addresses the gap in provision.

We provide care leavers and those young people that are looked after with shared living experiences, and their own keyworker to provide support tailored to the young persons needs. We assist young people in order to help them reach their potential through flexible and personalised key-work sessions and therapeutic support packages. We support young people to develop life skills needed to increase their ability to secure permanent housing and to gain employment.

SIA Continued

The level of keyworker support that we allocate depends on the young person's level of need. This can range from limited support where there are no charges levied, to more extensive 1:1 support or 2:1 support requiring up to 24-hour care. The types of package offered will be risk assessed at the outset and tailored to meet the young person's needs. We have semi-independent homes in Essex and Croydon, and we are still expanding!

